

Humbrella


News from Humber & Wolds Rural Community Council

Winter 2010 Issue no. 3

A high-speed train, possibly a Pendolino, is shown in a station. The train is black and yellow, with a large window on the front. The station has a curved, metallic roof structure. The train is moving, as indicated by the motion blur on the tracks and the background.

Rail Development Humber working with partners to boost local rail services

- *More Affordable Homes Needed for Local People in North Lincolnshire*
- *ERYLINK taking Action on Local Issues*
- *Network of Support Now Available for Voluntary and Community Organisations*
- *Community Plus Roadshow*
- *Community Led Planning DVD Launch*
- *News on the LEADER Funding Programme*
- *HALLO the Village Hall Newsletter*

A group of people, including men and women in business attire, are seated around a table in a meeting room. They are looking at documents and talking. The room has wood paneling and a patterned ceiling.

Results of ACRE's National Community Building Survey Announced at Westminster. MPs joined ACRE and representatives from the Rural Community Council Network at the event. see page 2

Working to improve the quality of life in the rural communities across the Humber sub region

Humbrella

Introduction...

Welcome to the first edition of *Humbrella* for 2010.



Penny Brown

Firstly, Happy New Year to all Humbrella readers. I always get excited about a new year. It's something about the freshness or clean, crispness of calendars and diaries. But more than that I think it's the openness and potential a new year can offer that I find exciting. Ok, maybe it shouldn't be any different to any other time of year, but I find myself thinking 'this year I just might...'

From an organisational point of view, I feel excited about the year ahead. As a charity HWRCC won't have it easy finding and securing funding (and it will get harder as government cuts hit public and voluntary and community sector activities). However, I am supported by a superb staff team and I look forward to celebrating our successes in 2010.

As I write this there is about six inches of snow outside and I feel to be somewhat 'cut-off'. In reality, I live in a market town and could walk to the nearest small shop for a paper and pint of milk if I felt the roads were too dangerous to get the car out. In fact there are few things I couldn't do even without the use of the car; go to my GP, post a parcel, buy a book, get cash from the bank. Watching the TV news coverage of "frozen Britain" I have been struck just how isolated the rural areas are in such bad weather. The forecasters remind us that it will be 'even colder' in rural / isolated areas. The local news informs us of which roads will and won't be gritted. I can only begin to imagine just how isolating it must feel for members of the rural communities who find themselves trapped within their homes unable to have access to many of the basic amenities and services that so many of us take for granted. Whilst I hope this is a once-in-twenty-year weather event, I will be discussing with HWRCC and partner colleagues how we can maximise the access to services in rural areas, even in the most difficult of circumstances.

As we have so much to tell you about the activities that have taken place in 2009 and those planned for 2010, this New Year edition of *Humbrella* has been increased so we can ensure our readers are fully aware of the work HWRCC and partners are undertaking, and the support currently available for those of you located in the rural areas of the region. You will read in this edition about the regional and local networks now working together to provide comprehensive support to voluntary and community sector organisations. Included in this edition you will also read about the results of the National Community Building Survey detailing ACRE's ten recommendations, rail developments and details on the groups already working through ERYLINK to improve the health and social care issues important to local people, and much more...

Before I sign off, can I ask you to take the time to complete our questionnaire about *Humbrella* and its contents. As you may know, *Humbrella* underwent a re-vamp last year, and we would like to know your views.

Penny Brown, Chief Executive

Penny Brown talks to Government's Rural Advocate, Dr Stuart Burgess

Penny Brown, HWRCC's Chief Executive, was invited to join Dr Stuart Burgess CBE for an informal discussion about rural communities in the Humber region.



Penny Brown, HWRCC's Chief Executive with Stuart Burgess

Dr Burgess, Chairman of the Commission for Rural Communities (CRC) and the Government's Rural Advocate, invited a small number of guests, including representatives from the Local Authority and the Rural Affairs Forum.

Topics discussed included the impact of coastal erosion on communities, and flood management. Penny said, "I was delighted to accept Dr Burgess' invitation. The discussions among the assembled group highlighted some of the complex land issues faced by this region. The impact that these issues are having, or will have in the future, for the rural communities is being considered and addressed locally. However, it is important that our Rural Advocate, Dr Burgess, is aware of the specific issues this region is facing and can assist in taking those issues to the national level."

Events Winter 2010

2010 - Numerous events are planned at stations across the Humber sub region in 2010. Download details from the HWRCC web site or contact Sally Baird (Yorkshire Coast Community Rail Partnership) on 01377 232138 or Gill Simpson (Barton and Cleethorpes Community Rail Partnership) on 01652 662028

17 February - Community Action on Energy Event
9.30am until 4.30pm - Ropewalk, Barton upon Humber

18 February - Community Plus Roadshow
1pm until 8pm - KP Golf Club, Pocklington

6 March - Community Led Planning DVD Launch Event
10am until 3pm - Eastrington Village Hall

26 March - Community Led Planning DVD Launch Event
10am until 3pm - Wilberfoss Village Hall

Free training available for volunteer Managers & Supervisors in February

- 15 February - Beverley
- 17 February - Goole
- 22 February - Bridlington

Contact Carole Johnson for more information Tel: 01430 430904
Email: carole.johnson@hwrcc.org.uk

Download full details on events from the HWRCC web site www.hwrcc.org.uk or contact us on 01430 430904. Details on events for Management Committees of village halls are also included in HALLO.

Rural Community Buildings

Results of the National Community Building Survey celebrates the success of volunteers managing buildings, but highlights a fragile future

Action with Communities in Rural England (ACRE) announced the results of the National Rural Community Buildings Survey at the Palace of Westminster in November 2009. MP's joined Humber and Wolds Rural Community, along with representatives from other Rural Community Councils across the country, who all helped ACRE undertake this research, were present at the event.

Use of England's rural community owned buildings has trebled since 1988, according to the research undertaken in ACRE's 2009 national survey of rural community buildings. The key findings celebrate the success of volunteers and the buildings they manage in supporting local action and service delivery. The 9,000 halls represent the largest network of community-owned facilities in the country with a total asset value of over £3 billion. They are a crucial but largely hidden aspect of community empowerment, and many have proved 'hard to reach' in efforts to support their sustainability. Although there are significant success stories to tell, the future for most is quite fragile.

The survey responses from 2,355 rural community buildings shows that volunteers contributed 18.5 hours per week on average to run their halls and that this volunteer support was the most significant factor in whether the halls were able to sustain themselves financially. Only 3% of halls received regular funding from their local authority. The remainder generating their income through hire charges, services and fundraising support from the local community and parish councils.

The survey also includes feedback on the valuable support service provided by the Rural Community Action Network to volunteers managing the halls; 83% of hall committees seeking their advice had rated it good or excellent. In the Humber sub region this support is provided by Humber and Wolds Rural Community Council's Village Hall Advisory Service.

ACRE's Chief Executive, Sylvia Brown said *"We need national and local policy makers and funders to appreciate that the work of managing and financing this vast network of community facilities falls almost entirely to local volunteers, not to local authorities. The traditional village hall still underpins much of community life in rural areas. The research demonstrates its role in supporting local democratic participation and in helping those most in need because of lack of transport with which to access more distant services"*.

"The Rural Community Action Network already recognises the incremental burden of increasing regulation and taxation that falls on local volunteers when few halls have any paid management staff to support their work. The data from the survey shows just how many of the 9,000 halls need appropriate external advice and support if they are to remain viable. Whilst public policy is focused on transferring new assets to communities, we are now very concerned to raise awareness of existing community owned assets that perform such a crucial role for local people".

ACRE's Village Hall Information Officer, Deborah Clarke adds: *"As a result of this survey, we have made 10 recommendations which we believe could make a huge difference to volunteers and the future of these community assets which have significant value in both financial terms and the outcomes they produce for communities"*



Margaret Kirk, Village Hall Advisor & Joanne Greenfield, Marketing Officer, at Westminster

Margaret Kirk, HWRCC's Village Hall Advisor concludes: *"The results of the 2009 national survey have reinforced the importance of supporting local volunteers in managing these vital rural community buildings.*

The specialist support provided by HWRCC in the Humber sub region is necessary to ensure the sustainability of these community facilities."

ACRE's Ten Recommendations



- 1.** Government policy on asset transfer should be re-balanced to ensure adequate recognition and support of the management of assets worth over £3 billion which are already in community ownership in rural communities.
- 2.** Government proposals should be better scrutinized to assess the regulatory impact on volunteer-run assets and services which dominate rural and urban community action.
- 3.** Government and funding bodies should actively seek a more realistic understanding of the volunteer support that sustains community owned assets and ensure policies and programmes better reflect both rural and urban community needs.
- 4.** Government should explore the potential for strategic investment in support services suitable for the significant proportion of 'hard to reach' community halls not accessing external advice and which are most vulnerable to risks such as loss of viability, volunteers or lack of compliance.
- 5.** Local government must recognise the contribution rural community owned buildings make to delivering local statutory objectives at little or no cost to them and ensure that a local register of rural community owned buildings is held in their area.
- 6.** Local government must recognise the value of investing in a comprehensive proactive support service, available locally, tailored to the needs of rural community-owned buildings, which can maximise and sustain their value to the community.
- 7.** Local government and funding bodies should recognise the significant challenge hall committees face when they seek to raise funds for essential capital works and respond with coordinated grant schemes which match the profile of intermittent investment needs.
- 8.** Local government should exercise 100% rate relief on community-owned halls in recognition of their contribution to local well-being.
- 9.** Government, local government and statutory funding bodies should recognise the potential return and invest in energy efficiency and renewable energy provision in community halls.
- 10.** Parish Councils and local village hall management committees should work together to plan the future viability of facilities and ensure best value is achieved for the community, for example:
 - Encourage hall management committees to seek information, support and training from the local community buildings advisory service or network.
 - Where necessary, establish a strategy of support involving, revenue finance or loan finance repaid from future precepts at an appropriate level for their community.

Make a donation

HWRCC is reliant upon funding to provide this fundamental work in the rural areas of the region. If an organisation or person wishes to make a donation, please download a Gift Aid Form from our web site.

East Riding Local (ERYLINK) Involvement Network

ERYLINK is the Local Involvement Network for the East Riding of Yorkshire; giving local people a stronger voice and influence over decisions on local health and social care services. It is an independent network of individuals, community and voluntary groups working together to look at health and social care services across the whole of the East Riding. Hosted by HWRCC and run by members, ERYLINK also has the legal powers to



ERYLINK team (from left to right) Cea Vulliamy, Ortrud Nield and Susan Oliver

examine services and look into issues of concern. As a consequence of consultation with local people, a number of action groups are now up and running focusing on the issues important to our communities:

Mental Health Group

Looking at issues around mental health and learning disability, which include the Mental Health Partnership and Community Psychiatric Teams to improve access to psychological therapies, user experience, learning disability strategy, etc.

Transport Group

The first action group to get up and running! This group is very active in looking at all issues around patient and visitor transport, and has formed productive relationships with relevant managers in Yorkshire Ambulance Service and various NHS Trusts.

GP Access Group

Undertaking the work of responding to and moving forward the issues raised in the ERYLINK consultation on GP access and to ensure that the voices of the community are heard in raising standards and promoting good practise.

Acute Hospitals Group

Monitor, raise and maintain the standard of health care provided in hospital settings for the residents of the East Riding.

Care in the Community Group

Considering the range of health and social care services provided in the community currently and what the future plans are to develop these.

Healthy Living Group

A new group which will focus on issues around health and well-being promotion and illness prevention.

Get involved and make a difference!

The ERYLINK exists for its members. As a democratic organisation, the ERYLINK seeks to hear the views of all its members and to work towards responding to those views.

The ERYLINK is your voice on the issues that concern you, so we need you to keep in touch and tell us what your local issues are in relation to health and social care.

There are so many ways you can get involved and here are just a few:

- *Join one of the action groups*

Work on an area that you are interested in.

- *Share your knowledge and experience in health and social care provision*

Contact a member of the team to discuss an issue that has arisen in your area.

- *Attend a Lead Group meeting*

ERYLINK members are welcome to attend meetings of the Lead Group and you can find information about Lead Group meetings, including minutes of those meetings on the website (www.erylink.gov.uk).

- *Volunteering*

Perhaps you would be willing to be called upon to come and help us when we have a large mail-out to do. Tea and biscuits are always provided in return for help in putting a mail-out together.

- *Technical support*

Would you like to help develop ERYLINK's web site or in generating interest through social networking sites?

- *Represent the ERYLINK*

Sometimes the ERYLINK is asked to provide a representative at external group and committee meetings —perhaps you would like to receive training to become involved in that way?

Or maybe there are other ways you would like to get involved that the team haven't thought of yet! *ERYLINK want to hear from you.*

ERYLINK FORUM

The ERYLINK Forum will provide an opportunity for local people to find out more about what work is being undertaken on behalf of the membership and join in discussions about health and social care.

The team is planning the first Forum in the region and needs your feedback. What do you feel needs to be covered . . .

- *How people's needs are assessed so they can continue to live in their own home/community?*
- *How the local NHS is structured?*
- *How to make a complaint or forward praise for a service you have received?*
- *Details of voluntary organisations supporting people with their health and social care needs?*

These are just some of the areas suggested. We want to hear what you would like covered in the first of a series of forums to be held across the East Riding of Yorkshire region.

Contact the ERYLINK team at HWRCC's Driffeld office

Address: Challenge House, 35 Eastgate North, Driffeld YO25 6DG

Tel No: 01377 232135 / 6

Email: erylink@hwrcc.org.uk Web site: www.erylink.org.uk

Make a difference to the way in which health and social care is delivered in the region.

Become a member of the ERYLINK.



Northern Lincolnshire Rural Housing

More affordable homes needed for local people

In late 2009 the Northern Lincolnshire Rural Housing Enabler Project in partnership with the housing strategy teams of North and North East Lincolnshire Councils, held a Rural Housing Event at the CATCH Centre, Stallingborough.

The purpose of the event was to discuss the need to sustain village communities in Northern Lincolnshire through the provision of more affordable homes for local people.

Over 30 delegates attended the event, including representatives from Parish Councils, the two Local Authorities, housing associations and developers. Sally Grindrod-Smith and Sam England, of North and North East Lincolnshire Councils, gave a presentation on rural housing issues. This was followed by a presentation by David Broadmeadow, HWRCC's Rural Housing Enabler and Simon Drummond-Hay from Fordhams Housing Consultants on understanding local housing needs.

Simon Drummond-Hay provided a summary of the results of the housing needs survey which Fordhams carried out earlier in the year across all the rural parishes of North Lincolnshire. *The results of the survey has shown that there is a need in the rural parishes of some 493 homes per annum*, with the largest need being in settlements, such as, Crowle, Broughton, Winterton, Hibaldstow, Gunness and Barnetby-le-Wold.



David Broadmeadow then focussed on the next steps to ensure the delivery of more affordable homes and it was evident that finding suitable land is critical to achieve more success, and Parish Councils have an important role to play with their strong local knowledge of potential suitable sites.

Local Homes for Local People DVD and the Guide to the Provision of Rural Affordable Homes Launched

The newly produced DVD "Local Homes for Local People" and the Guide to the Provision of Rural Affordable Homes in Northern Lincolnshire, written by David Broadmeadow were launched at the event. The DVD was produced by the project in partnership with Nunny TV, a community-based media company based in Grimsby. Both the DVD and the Guide have been produced principally to raise awareness of rural housing issues with Parish Councils, several of whom have now received copies of these.

More affordable homes are underway with new schemes of 11 homes nearing completion in West Butterwick and Wroot. In 2010 we shall be using the results of the housing needs surveys to target investment in those rural communities where there is an identified housing need.

Copies of the DVD and Guide are available, please contact David Broadmeadow on 01652 662023 or email david.broadmeadow@hwrcc.org.uk.



Community Led Planning DVD Launched

Plan the future of your community



Humber and Wolds Rural Community Council (HWRCC) in partnership with East Riding of Yorkshire Council's (ERYC) Rural Development Department have produced a DVD which is aimed at communities who are in the process of completing a Community Led Parish Plan (CLPP) or are contemplating starting the process.

The DVD visually illustrates how a community's shared vision for the future of their village can be set out through the Community Led Planning process; how a community takes issues identified through the process and turns these into action through working in partnership with service provider. This is a key area covered by the DVD.



Two launch events have taken place so far at North Fordingham Village Hall and Aldbrough Youth Centre. Attendees included Parish Councillors, Community Led Parish Plan Steering Group members, Ward Councillors and Officers from Humber and Wolds Rural Community Council and East Riding of Yorkshire Council (ERYC). Specialists supporting communities

undertaking Community Led Plans conducted the following presentations and workshops at the launch events:

- Peter Hirschfeld, HWRCC's Community Led Planning Officer
What is a Community Led Parish Plan?
- Karen Wood, ERYC's Rural Communities Officer
How to prioritise actions and identify partner organisations to work with
- ERYC's Emergency Planning Team
Creating an emergency plan, including a table top exercise that enabled attendees to practice emergency procedures.
- Dawn Rivers, ERYC's External Funding Department
Accessing funding and GrantNet

The DVD also includes several articles, templates and links that Community Led Planning groups will find useful.

More launch events are planned:

6 March 2010 Eastrington Village Hall - 10am until 3pm
26 March 2010 Wilberfoss Village Hall - 10am until 3pm

Don't miss the next DVD launch event!

For more details on the events or to request a copy of the DVD, please contact: Peter Hirschfeld, HWRCC's Community Led Planning Officer on 01430 434047 or email peter.hirschfeld@hwrcc.org.uk

Karen Wood, Rural Communities Officer, East Riding of Yorkshire Council on 01759 304931 or email karen.wood@eastriding.gov.uk



Hallo!

News for Management Committees of Rural Community Buildings in the East Riding of Yorkshire, North & North East Lincolnshire.

National Village Hall Survey 2009

"9,000 halls represent the largest network of community owned facilities in the country with a total asset value of £3 billion. 97% of these generate their income through hire charges services and fundraising support from the local community and Parish Councils."



Margaret Kirk, Village Hall Advisor

Margaret Kirk, HWRCC's Village Hall Advisor, attended the National Village Hall's Forum Annual General Meeting held in the Palace of Westminster on Thursday, 12th November 2009. During the meeting, which was attended by MPs John Grogan, David Drew, Oliver Letwin and Nicholas Winterton, ACRE launched the results of the 2009 National Village Hall Survey. Full article on page 2 of Humbrella.

Successful Grant Applications

Congratulations to the following hall committees for their successful grant applications:

- COMMA Fund – Newport Recreation Hall £12,000**
- COMMA Fund – North Frodingham Village Hall £11,000**
- WREN – Ottringham Village Institute £8,899**
- HPFA WREN Awards – North Cave Village Hall £4,500**
- HPFA WREN Awards – Flamborough Methodist Church £1,080**
- HPFA WREN Awards – Holme on Spalding Moor Village Hall £5,000**
- HPFA WREN Awards – Ottringham Village Hall £5,000**
- HPFA WREN Awards – Messingham Village Hall £4,765**
- Garfield Weston Foundation – North Cave Village Hall £5,000**
- Garfield Weston Foundation - St. Oswalds Althorpe £2,000**
- LEADER (North Lincs.) - St. Oswalds Althorpe £26,000**
- LEADER (North Lincs.) – East Butterwick Village Hall £40,000**
- LEADER (North Lincs.) – Worlaby Recreation Committee £69,000**
- LEADER (North Lincs.) – Broughton Village Hall £10,000**

If you have been successful in securing grant funding to refurbish, equip or even build a new community building in your village, we want to hear from you. Please email Margaret with your success stories for inclusion in future editions of HALLO.

Margaret Kirk Tel: 01430 430904 Email: margaret.kirk@hwrcc.org.uk

Useful Websites & Contacts

- Big Lottery Fund:** www.biglotteryfund.org.uk
- WREN, grants through the Landfill Tax Credit Scheme:** www.wren.org.uk
- Comic Relief:** www.comicrelief.com/applyforagrant/grants-uk-rnd.shtml
- Biffaward, grants through the Landfill Tax Credit Scheme:** www.biffaward.org
- Evolve EB, grants through the Landfill Tax Credit Scheme:** www.evolveeb.co.uk
- Cemex:** www.rmccf.org.uk
- Garfield Weston Foundation:** www.garfieldweston.org
- EON Source Fund:** www.eon-uk.com/about/source.aspx
- Hedley Foundation:** www.hedleyfoundation.org.uk
- The Co-Operative Group Community Fund:** www.co-operative.co.uk
- LEADER North Lincolnshire:** paul.crompton@northlincs.gov.uk tel: 01724 297781

Place of Worship Creates Community Space with Grant Aid

Woldgate Chapel, Haisthorpe



A former primitive Methodist chapel built more than 120 years ago has received a new lease of life as a church and community centre.

Woldgate Chapel at Haisthorpe, a village on the A165 near Bridlington, has been refurbished thanks to community grants totalling almost £22,000.

The chapel and community centre serves Haisthorpe and the surrounding villages of Carnaby, Harpham, Thornholme and Burton Agnes. It is now being used by a variety of community groups and provides this area with a venue for social, educational and recreational activities, and services. Villagers have been welcomed to services and events, and the Parish Council holds its meetings there.

Local people and some from further afield attended the recent opening and dedication service to view the new-look premises and to hear about future plans. Information and images of the activities already taking place were on display.

The days of a Methodist Society at Woldgate came to an end just over three years ago when the membership reduced to four. The Methodist Circuit was left to decide what to do with the building. A Management Committee was formed and help was sought from Margaret Kirk, the Village Halls Advisor at Humber and Wolds Rural Community Council, who set out the guidelines on how to proceed. This much-praised village project is the result of her guidance and encouragement and the hard work and time-giving of the committee.

Advice on grants was sought from the East Riding of Yorkshire Council and the committee was given a lot of encouraging help. Eventually, a Modernising Rural Delivery grant of over £11,000 from the Yorkshire Forward Fund and an Awards for All grant of nearly £9,000 were obtained. A number of people from the circuit churches helped with the refurbishment work and the building is now ideal for church and community use. The raised pews (soon to be re-cushioned) in the church area and the hall, adjoining kitchen and dining facilities, with some new tables and chairs, make the premises ideal for group meetings, seminars and get-togethers. The two areas can be screened from each other when necessary.

The Woldgate Chapel at Haisthorpe has received a lot of favourable comments from various sources, including the York and Hull District of the Methodist Church, which sees it as an example as what can be done when village churches close. It is a rare achievement within the district.

(Extracted from an article provided by Mr. Selwyn Dunford)

St Oswald's Church, Althorpe

St Oswald's Church in Althorpe has been successful in attracting up to £25k from North Lincolnshire Council's LEADER Programme provided they can 'match' this figure with other finance. In addition, the committee has been successful in obtaining £10k from National Churches Trust; £2k from Garfield Weston and have applied to WREN for £9k, as well as having their own funds, if needed.

The LEADER funding has to be spent quickly to install a new kitchen and toilet in the Church. The project also includes new roofs to the Nave and South Porch, chairs, tables carpeting, decorations, displays, etc, as far as the money goes!

The aim is to make the Church building more suitable for other community uses, e.g. meetings, concerts, café and as a heritage centre. The church is a beautiful 12th century grade one listed building and the community are very proud of this building. They plan to make the building more sustainable and wider used.

(Extracted from an article provided by Mr. Norman Chaddock)

Funding News

Community Sustainable Energy Programme

Not for profit organisations such as community groups, charities, schools, colleges and faith groups, etc, are being invited to apply for funding to install renewable energy technologies (such as, wind turbines and solar panels) and energy saving measures (such as, roof and cavity wall insulation).

Under the new Community Sustainable Energy Programme £8 million will be available for the installation of micro generation technologies and energy efficiency measures (capital grants) and £1 million for project development grants. The maximum capital grant available is £50,000 or 50% of the project costs. The maximum project development grant is £5,000 or 75% of the study cost, whichever is lower.

The funding programme is being managed by the Building Research Establishment on behalf of the Big Lottery Fund's Changing Spaces Programme. Project development grants (for studies investigating the feasibility of installing any combination of the technologies) will be awarded on a first-come first-served basis until all funds are spent. Capital grants will be awarded on a competitive basis at quarterly selection panel meetings. The next application deadline is the 29th January 2010.

<http://www.communitysustainable.org.uk/>

• Important changes to WREN funding policy •

With immediate effect, WREN will no longer be accepting applications for funding to construct new buildings or extensions to existing buildings. WREN will still consider funding applications for internal finishes, fixtures and fittings within a newly built facility and will continue to fund the refurbishment of existing buildings. If you are unsure whether your application is still eligible, please contact WREN for advice before completing and submitting your application.

With effect from Friday, 27th November 2009 Camaby Landfill Site was no longer accepted as a qualifying site for WREN funding.

Funding for community shops in rural areas

The Village Retail Services Association in partnership with Esmee Fairbairn Foundation, Co-operative and Community Finance have funding available to support the start up of new Community owned shops in rural areas of England or to save an existing shop by transfer to community ownership. The funding which will be available over the next three years will provide up to £40,000 per shop. This will be made up of a grant of £20,000 together with a loan of £20,000 from Co-operative and Community Finance. Eligible applicants will include community based organisations located in rural communities of not less than 300 residents. The community is required to raise match funding through community contributions, which could take the form of share capital, donations raised through community fundraising events and grants obtained from other sources to the same or greater value than the grant requested from the Village CORE Programme. At least some of the funds raised should have been provided by the community itself and not solely through external grants.

The application process commences with a telephone interview with one of the programme managers. If the community appear to meet the criteria within the programme timeframe and if Village Core funds are available, application forms are sent electronically where possible to the main contact person on the committee. The forms must be returned within 6 weeks of the telephone interview. <http://www.plunkett.co.uk/whatwedo/core/apply/Apply.cfm>

Are you using the correct application form?

When applying for grants, please ensure you are using the most up to date guidance notes and completing the latest application forms. Funders frequently make changes to their funding programmes and application forms, and will sometimes return or even reject applications written on out of date forms.

www.hwrcc.org.uk

Cavity Wall Insulation - Do a Pre-Installation Survey first

Cavity wall insulation is a great way to prevent heat escaping from a building through the walls. There are many schemes to help home owners carry out this work for a relatively small cost, so consequently it is currently promoted quite extensively. Following an energy audit of your hall it may be highlighted as a procedure to help conserve energy. However, it is important to ensure that the contractor carries out a pre-installation survey to ensure the location and construction of the building is suitable for this type of insulation solution.

Updated Village Hall Directory Now Available

In the July 2008 edition of HALLO we enclosed an amendment form for committees to complete if their contact details or any other information had changed since the production of the 1998 Village Hall Directory. The Directory has been purchased by a number of organisations in the past and does help in promoting your Hall to potential customers.

We only received a small number of responses and requested further replies in the September edition of HALLO. As time passed we had to assume that if no amendment form was returned then the information was still applicable. Karen Weeks, HWRCC's Administration Officer, has worked very hard to compile the information for approximately 260 halls across the sub-region and has now completed the 2009 edition of this Village Hall Directory. The Directory includes all relevant contact information and details on the facilities available at all halls in the region. This is now available to buy in hard copy for £6.50 and electronically at £3. *Please contact Karen Weeks on 01430 430904 or email Karen.weeks@hwrcc.org.uk to place your order.*

halko

TIMBER CONSTRUCTION COMPANY

14 Keith Avenue, Huntington, York YO32 9QH Ph: 01904 763 095

VILLAGE HALLS, COMMUNITY HALLS & PAVILIONS

- Specialists in Construction & Refurbishment of Village Halls, Community Halls & Pavilion's
- Free Hall Inspections & Building advice Service
- Free Design Service with floor plans & elevations
 - Help with Planning Permission
 - Advice & Direction on Funding

"Over 100 years Building Experience"

Call Mal Turner on 07511 529 712 to make an appointment

www.halko.co.uk

Successful.



Insurance: from trustee indemnity to the horticultural show

Aon has been successfully creating insurance solutions for thousands of village halls around the country for over forty years. With the help of our extensive experience and unrivalled knowledge, our dedicated team will treat you like number one.

Whether you require cover for accidental damage and public liability, indemnity insurance for hirers, loss of revenue cover or insurance for special events, we will provide just the policy you need.

For more information call the Aon Village Hall Team on **0845 600 1682**

Aon

Aon Limited is authorised and regulated by the Financial Services Authority in respect of insurance mediation activities only. Registered office: Aon Limited, 8 Devonshire Square, London, EC2M 4PL. Telephone calls may be monitored and recorded for training purposes. FP F5383-VH-0109

Events Winter 2010 for Village Hall Management Committees

- 10 February 2010 Development of a Community Buildings Network In the Holderness area for South Holderness halls the meeting will be at Keyingham Village hall at 9.30am. For North Holderness halls the meeting will be at Withernwick School Rooms at 1.30pm.
- 17 February 2010 North Lincolnshire Community Buildings Network 'Is Your Building Costing The Earth?' 9.45am until 4.30pm in the Humber Room at the Ropewalk. A Green Communities Training Workshop focusing on energy efficiency in community buildings. Places are limited to 24, so please book early to avoid disappointment. Contact Margaret Kirk to book your place before the closing date of 8th February 2010. A refundable deposit of £10 is required with your booking. Cheques should be made payable to Voluntary Action North Lincolnshire.
- Wednesday 17th March Safeguarding for Children 2pm until 4pm at Greeson Hall in Scunthorpe. This event has been organised by Community Matters and Children England.

For more information on these events, please contact Margaret Kirk
Tel No: 01430 434046 Email: margaret.kirk@hwrcc.org.uk

Updated Village Hall Information Sheets now available from HWRCC

- Village Hall Information Sheet No. 5 (Village Halls and Children) has been updated and covers the new Vetting and Barring Scheme, plus relevant regulations and requirements following the Childcare Act 2006.
- TV and Film in Community Buildings information.

Five go rural at the ACRE Conference



HWRCC's Chief Executive, Penny Brown and Bryan Davis, Chairman, with Janet Thornton, Bill Cross and Linda Lloyd from Rural Action Yorkshire.

Chief Executives and Trustees from HWRCC and Rural Action Yorkshire (RAY), joined over 70 members of ACRE at the Developing RCAN event 2009 held on the 11th & 12th November 2009.

The Network Conference of the Rural Community Action Network (RCAN), held at Burleigh Court, Loughborough University, was an opportunity for RCAN members to discuss relevant issues concerning their work with rural communities.



At the two day event Chief Executives, Chairs and senior members of staff from RCAN members were joined by staff and Trustees of ACRE to discuss business development and opportunities for strategic and political influencing in the run up to next year's general election.

The Yorkshire and Humber delegation was swelled in number by the attendance of Janet Thornton, Trustee for RAY. At the ACRE AGM, held during the conference, Janet officially took over from Bryan Davis as the Regional ACRE Board representative.

A huge variety of tables & chairs

Please Quote ACRE when ordering

Fire & Safety

- Great value
- Fire extinguisher replacement
- Maintenance contract
- FREE no obligation site survey
- Signs & Stands
- Accident books & First aid kits

Kitchen Design

Kitchen design & installation service
FREE quotation available on request
All accessories

- Crockery
- Refrigeration
- Dishwasher
- Soup Kettles
- Cookers
- General purpose trolleys

Ultralight Staging

Easy to assemble in 4 easy steps

0845 458 4584 www.cpsonline.co.uk CPS Ltd Freepost GL1 TBR

VirtualRiders

Free IT Support

- Reduce your IT costs
- Free diagnostic
- Support with IT funding bids
- Appropriate technology solutions
- Covering the Humber
- Exclusive to the Voluntary & Community sectors

☎ **0845 337 2949**

www.virtualriders.org or
www.virtualriders.org.uk or
help@virtualriders.org

Big Boost to Local Rail Services

On Sunday 13th December 2009 the new train services along the Hull to Scarborough railway, including a full all year Sunday Service, was introduced. The extra trains also include more services to Bridlington for commuters in the late afternoon period from Hull.



Sally Baird & David Walford with Cllr Godfrey Allanson (Chairman of Transpot Forum, Scarborough Borough Council) & Steve Butcher (Area Director East, Northern Rail)

David Walford, HWRCC's Sub-regional Rail Development Officer for Rail Development Humber, welcomed the new services and expressed his hopes, not just for the new rail services, but for the boost that they will give to the tourist and retail industries. David tells Humbrella, *"The full Sunday service will give a massive boost to the coastal tourist trade from Scarborough, Filey and Bridlington, along with Driffeld, Beverley and Hull. Increasing numbers of visitors wishing to get away for long weekends, especially in Spring and Autumn."*

David went on to say, *"Great credit goes to the years of hard work by members of the Yorkshire Coast Community Rail Partnership, who under the management of Rail Development Humber, have worked with the train operators, Northern Rail, to bring about the new services. The Yorkshire Coast Community Rail Partnership has marketed both the railway and the area's attractions across the Yorkshire region. This has not only boosted passenger numbers but has made a positive impact on tourism. This in turn gives a lift to the local economy and employment prospects, as thousands of extra visitors come to the area. I hope the tourist industry will latch onto these new services, while commuters will also benefit as more trains will take passengers to Bridlington each evening."*

Northern Rail has worked with the locally based Yorkshire Coast Community Rail Partnership (YCCRP) to promote the line and push various joint ticket offers to entice new travellers to the area. Many weekend trains will also have extra carriages to accommodate the increase in passenger numbers to the coast. These improvements come on the back of several years of investments by Network Rail, improving the track and stations along the line.

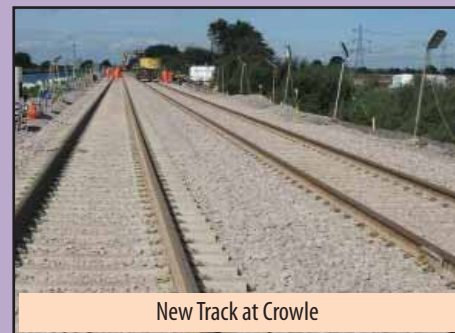
Passengers are urged to pick up new timetables from their local stations, as many train times are slightly different from the 13th December changeover or check online. For further information, please contact HWRCC's Rail Partnership Officer Sally Baird on 01377 232138 or email sally.baird@hwrcc.org.uk.



Rail Development Humber Rail Development, Real Growth

The work of the Community Rail Partnerships extends much further than just the marketing and promotions of rail services across the region. A good example of this was displayed by the work of the Barton Cleethorpes Community Rail Partnership this summer, working under the management of David Walford at Rail Development Humber (hosted by HWRCC).

With an eleven week closure of the main South Pennine rail route between Doncaster and Scunthorpe, the BCCRP (Barton Cleethorpes Community Rail Partnership) and Rail Development Humber (RDH) managed the media and public relations aspects of the project, on behalf of the Local Authorities.



New Track at Crowle

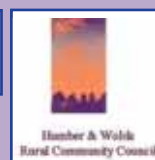
This work ensured that the travelling public were kept informed of the revised travel arrangements affecting many passengers, both local and regional. Volunteers acted as marshals to ensure passengers were in the correct locations to catch replacement coaches and hand out the emergency timetables produced by the Train Operating Companies (TOCs) and Local Authorities (LAs). David Walford made regular comments via the local media to ensure passengers not only understood the temporary travel arrangements, but also understood the massive investments into this important rail route.



Piling at Medge Hall

The main works at Medge Hall were complex and involved removing the 'old' railway, sinking hundreds of piles down to the bedrock, and then building a new concrete deck to hold the new railway above. David Walford commented, *"This was a very complicated project, effectively building an underground viaduct to cross this area of soft peat that could no longer take the weight of so many heavy freight trains at high speed. I compliment Network Rail for the speed of the works and the extensive planning that went into the execution of the job."*

Network Rail also carried out extensive track renewal works and a new layout at Thorne Junction. With the completion of the job, the BCCRP and RDH teams turned their attention to promoting the newly opened lines and assisted the train operators in marketing special offers to build passenger numbers once again. Line speeds have now been increased and the route is ready for many decades of service to the North Lincolnshire economy.



Supporting Voluntary and Community Organisations

Funded through the Big Lottery's Building and Sustaining Infrastructure Services (BASIS), a network has now launched in the Humber and Yorkshire region that aims to support voluntary and community sector organisations. Networks have been developed throughout England to ensure voluntary and community sector organisations have access to high quality support that will help them be more effective and sustainable. The network in the Yorkshire and Humber region comprises of the following:

REGIONAL LEVEL

REGIONAL RURAL NETWORK

Aims to provide a voice for voluntary and community sector organisations through:

- Working in partnership with Rural Partnership Plus and community organisations to ensure needs and priorities of voluntary and community sector organisations are identified.
- Strengthening the influence that rural communities have on the development of policies and services.

LOCAL LEVEL

RURAL PARTNERSHIP PLUS

Supports, develops and represents voluntary and community sector organisations in the rural areas of the Humber sub region. Aims to:

- Identify the needs and priorities of rural community and voluntary organisations
- Provide a tailored support service for them
- Link organisations to specialist services

FUNDRAISING PLUS

Provides small voluntary and community sector organisations with the following support services:

- Funding advice • Training
- Financial health checks
- Support to increase fundraising capacity

MONEY MATTERS PLUS

Provides financial management advice to charities and voluntary and community organisations.

They can help with the following:

- Review of financial systems and controls
- Identification of gaps and potential risks in financial systems
- Signposting to other organisations that can provide practical support • Training

If you are involved in the management of an organisation based in the East Riding of Yorkshire, North and North East Lincolnshire and want to access any of these services, please contact: *Carole Johnson, Rural Partnership Plus*
Co-ordinator Tel: 01430 430904 Email: carole.johnson@hwrcc.org.uk

Community Plus Roadshow

Thursday, 18 February 2010
KP Golf Club, Pocklington
Join us 1pm until 4pm or 5pm until 8pm
(A buffet will be served between 4pm and 5pm)

The first in a series of roadshows to introduce the support network now available to voluntary and community sector organisations in the Yorkshire and Humber region is taking place.

The event is designed to reach out to voluntary groups of all sizes and will cover the following areas:

Representation – ensuring that the views and needs of groups are understood and properly reflected in policy and planning decisions that directly affect you.

Funding – signposting the funding sources that are available, how applications can be made, and how groups need to prepare themselves to meet the requirements that funders may have.

Organisation – implementing good practices to make sure that your group has the best structure, people in place with the right skills and processes that support the aims of the group.

Managing Finances – adopting ways to improve the control of your group's money, manage money more effectively and report more clearly to the group's management, funders, and users.

There will be presentations on these four topical issues during the afternoon which will be repeated in the evening. The event will provide a great opportunity to link up with other groups that have common or complimentary aims. Representatives from numerous support organisations will also be present throughout the day.

All this takes place in a spectacular location in the heart of the Wolds, the KP Golf Club, near Pocklington. Refreshments will be available and a buffet will be provided at the end of the afternoon. *A shuttle bus service will provide convenient access from various locations in the surrounding area.*

Please contact the following for more information:

Carole Johnson, Humber & Wolds Rural Community Council
Tel No: 01430 430904 Email: carole.johnson@hwrcc.org.uk

Ian Oxley, Community Economic Regeneration Team
Tel No: 01469 572313 Email: ian@cert-ltd.co.uk

Fiona Turner, East Riding Voluntary Action Services
Tel No: 01482 871077 Email: fiona@ervas.org.uk



The Community Plus Roadshow Programme is co-sponsored by the following Big Lottery Projects:

Fundraising Plus • Money Matters Plus • Rural Partnerships Plus

LEADER has Faith in Rural Community

The Coast, Wolds, Wetlands and Waterways LEADER covers most of the rural East Riding of Yorkshire as well as parts of Ryedale and Scarborough. It is a £2.8 million funding programme from the Rural Development Programme for England, which runs until 2013.

LEADER isn't just a funding pot, but is essentially about an approach and methodology to rural development. Having only launched in April 2009, LEADER has already made a difference to a number of rural communities.

The programme's key theme is Rural Heritage and Culture linked, where appropriate to service provision, with business growth and opportunities as cross cutting themes. A good example of a recently funded project that demonstrates the programme's strategic 'bottom-up meets top down' approach is the Riverside Pop-In Café at St Andrews Church at Paull. This is a remote rural village, sitting quietly on the Banks of the Humber, encompassed by historical events and sites of interest and dating back to the Domesday book. Paull was classed as a 40% area of deprivation and has suffered significant decline over recent years.

The village has lost its Post Office, local shop and a pub, and in 2007 was faced with the prospect of having to close the church, unless vital repairs were carried out to a tune of £169,756.

Within 16 months the community had secured the following funds to carry out the repairs:

English Heritage	81,000
Sharpe Trustees	75
All Churches Trust	500
Sir John Priestman Charity Trust	3000
Alan Evans Memorial Trust	2000
Nippon Gohsei UK Ltd.	5000
Diocese of York	3000
Landfill Yorkshire Historic Churches Trust	19,450
National Churches Trust	10,000
Woolfson Foundation	4000
Veolia	5000
Local Fundraising from Community	36,731
Total:	169,756



The Parochial Church Council was subsequently forced to think about how the Church could assist in the sustainability of the community by acting as a base for raising funds with a view to becoming self-funding. It was identified via community consultation

that facilities to support local visitor attractions were badly needed and the Riverside Pop-In Café idea was created.

LEADER generally requires match funding and the above table illustrates a good example. The Parochial Church Council were also able to demonstrate how they had formed strategic partnerships with local businesses and created networks with organisations further afield. This enabled LEADER to assist in the provision of small catering facilities and a Nature Trail around the village that is also fully accessible to disabled visitors. The Trail markers will incorporate rubbings of local attractions/wildlife, drawn by local school children and will also provide information in Braille.

Visitors to the Trail and to other attractions nearby, such as, the Wetlands and the local Fort, can use the café facilities and also learn about Paul's historical and cultural past from the Volunteers running the café. There is also planned a series of innovative fundraising events which includes a launch and re-dedication of the church by the Archbishop of York in January 2010.

Nicola Gray, Rural Capacity Building Officer for LEADER, said "the facilities and nature trail at the Church encapsulates community engagement in our key theme of Heritage and Culture. This community has illustrated that by working together with other communities and creating strong partnerships they have been able to put themselves on the map."

The LEADER model has seven specific features and here is an example of one of them where this case study sits: *A bottom-up approach, engaging the active participation of local people in planning, decision making and implementation of the development of the area.*

Information about the CWWW LEADER programme and how to apply can be found at www.ruralprogrammeseastYorkshire.co.uk/rdpe

The LEADER programme is being financed by the European Agriculture Fund for Rural Development as well as DEFRA and is managed by Yorkshire Forward as part of the Rural Development Plan for England.

Children from Northcott School meet Santa

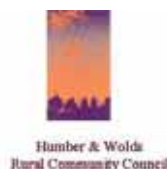
The Yorkshire Coast Community Rail Partnership (YCCRP), in association with Northern Rail, took 30 people from Hull Paragon station to Bridlington by train in December 2009.



The trip was for some of the children of Northcott Special School in Hull, who were invited with their parents and siblings, plus some staff members (who were kindly working on a Sunday) to join the YCCRP on a trip to Bridlington.

Santa greeted the children on the train and a Christmas crafts workshop was provided at MIND Old Parcels Office in Bridlington, where refreshments were provided. East Yorkshire Junior Football League in Bridlington funded the workshop staff and hire of the room, plus some gifts for the santa bags. In addition, W Boyes & Co Ltd donated a £10 voucher and Co op donated the mince pies.

YCCRP wishes to thank everyone involved in making this an enjoyable occasion for all the children who attended.



For details on advertising or sponsoring Umbrella contact Joanne Greenfield on 01430 430904.



Meet the Volunteers

Mavis Austin tells Humbrella why she became a member of the East Riding Local Involvement Network (ERYLINK)

Why did you get involved in the ERYLINK?

I went onto the bus when it came to Pocklington to ask about the LINK and what their aims were. I am profoundly deaf and suffer from Arthritis, Myelitis (inflammation of the spinal cord), severe nerve damage, tinnitus and other medical problems. My mobility is limited and I am in constant pain. I have been very unhappy about the lack of equipment to keep me independent in my own home and to have a social life. I receive no suitable equipment from the Sensory Unit of East Riding.

What is your involvement?

I went along to a meeting at Driffeld and was impressed by the diversity of people who attended. The group was very dedicated, and I soon realised that, as a group and not as an individual, an improvement in services could be achieved as ERYLINK would have a voice. I am now a member of the sub-committee for GP Access. The amount of time I spend varies from week to week as sometimes there is quite a lot to read and understand. I attend the meetings which last usually for about 2 hours every other month. I am now profoundly deaf and have a hearing dog for deaf people called Daisy who accompanies me all the time. Like myself Daisy loves meeting new people – by being an active member of the group this has given me my confidence back. Just because I am deaf and disabled does not mean I am daft!

How do you believe the work of ERYLINK is impacting upon health and social care provision in the area?

ERYLINK has members from all walks of life who know from personal experience or from friends, relatives, etc, of problems encountered with various areas of care in our area, as well as good practices. ERYLINK can monitor situations and suggest ways of improving services which are under-achieving. Sometimes just a small change can make a huge difference to a service.

Tell us about your previous history

I originally come from North London. I am very interested in the law having worked for Trust Barristers for 12 years. I then moved on to working for a telecommunications company for 11 years before having to stop working due to my various health problems.



I assisted Mr Trinder in the development of the Loop System and also Mr Jonathan Hazell in the development of the first maskers for Tinnitus. I have always done voluntary work. Since moving to Pocklington I have been involved in setting up the Pain Support Group for York Hospital and was secretary for 6 years.

If any of our readers want to get involved in the ERYLINK who should they contact?

*The ERYLINK project is based at HWRCC's Driffeld office
Tel No: 01377 232135 Web site: www.erylink.org.uk.*

Richard Wagland celebrating his 70th Birthday A Volunteer Driver for HWRCC's Community Transport Services



Richard has driven for HWRCC for over 6 years and is probably one of our busiest drivers as he is very rarely unable to help.

His hobbies and interests extend to photography, reading (he has at least three novels on the go at any one time) and extensive travelling including Malaya, Mexico, and (at the last count) 22 of the states in the USA. He's now taken to parachute jumping at the age of 70.

When asked why he continues to turn out whatever the weather to support both groups and individuals requiring our accessible mini bus transport he replied *"I enjoy meeting interesting people and visiting new and different places"*.

A big thank you to Richard on behalf of our clients and the HWRCC Transport team.

Long may you continue volunteer driving... and parachute jumping!

Without the help of the volunteer drivers, HWRCC would be unable to provide this vital service in the rural areas of North Lincolnshire.

**HWRCC's Transport
Solution Projects
continue to grow.**

*Volunteer Drivers needed to meet demand
tel: 01652 662016.*



If you would like details on the work you are currently undertaking in the communities of East Yorkshire, North and North East Lincolnshire mentioning in Humbrella, please call Joanne on 01430 430904 or email joanne.greenfield@hwrcc.org.uk.

We hope that you find Humbrella informative, interesting and easy to read.

The team would appreciate your feedback and suggestions on what you would like to see included in future editions of the magazine. Please forward any comments or questions by email to info@hwrcc.org.uk, or write to:

Humbrella (HWRCC), 14 Market Place, Howden, East Yorkshire, DN14 7BJ.